

106°25.000' W

106°24.000' W

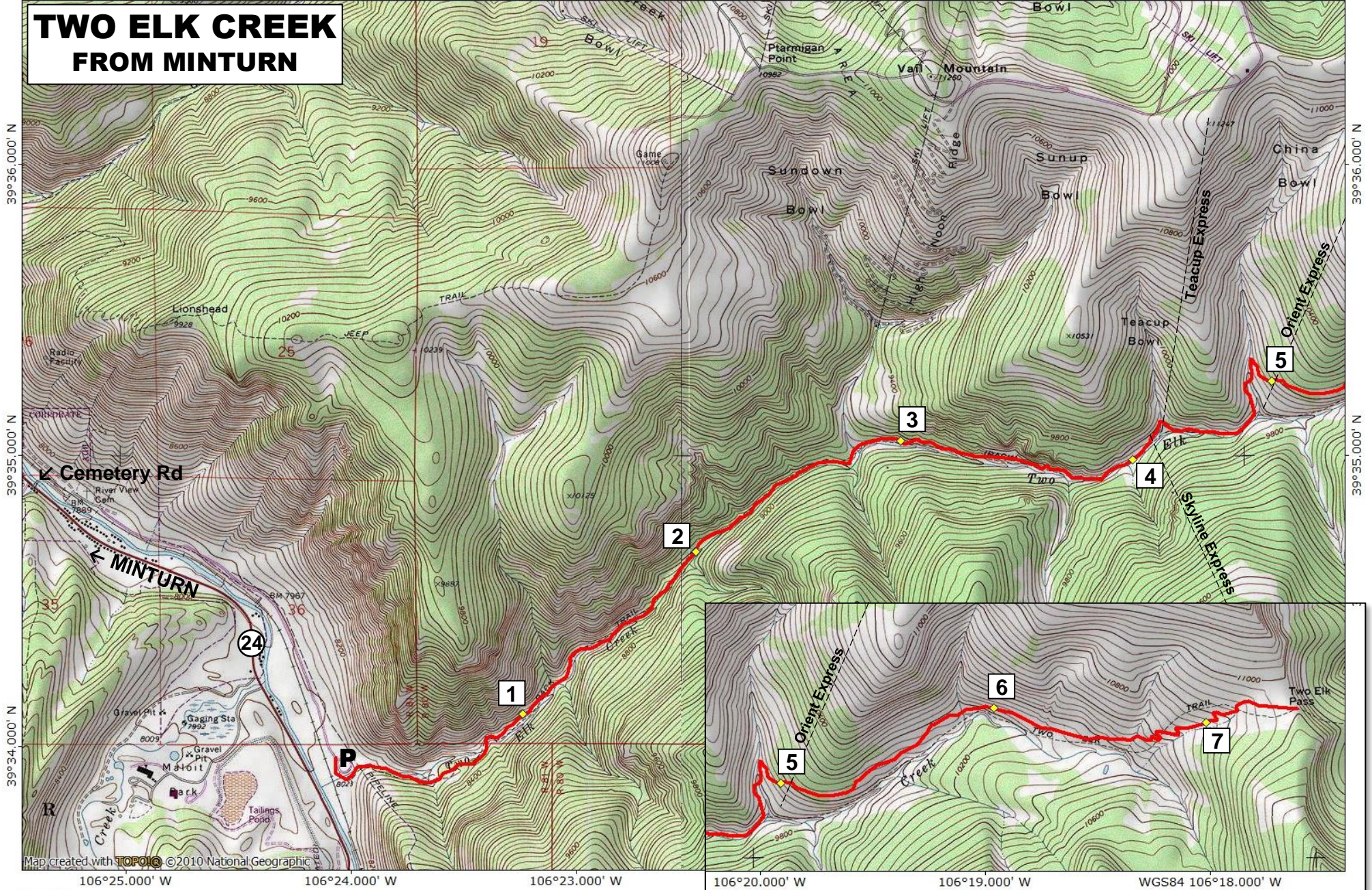
106°23.000' W

106°22.000' W

106°21.000' W

WGS84 106°20.000' W

TWO ELK CREEK FROM MINTURN



39°36.000' N

39°35.000' N

39°34.000' N

39°36.000' N

39°35.000' N

39°34.000' N

106°25.000' W

106°24.000' W

106°23.000' W

106°20.000' W

106°19.000' W

WGS84 106°18.000' W



SCALE = 1:32500

