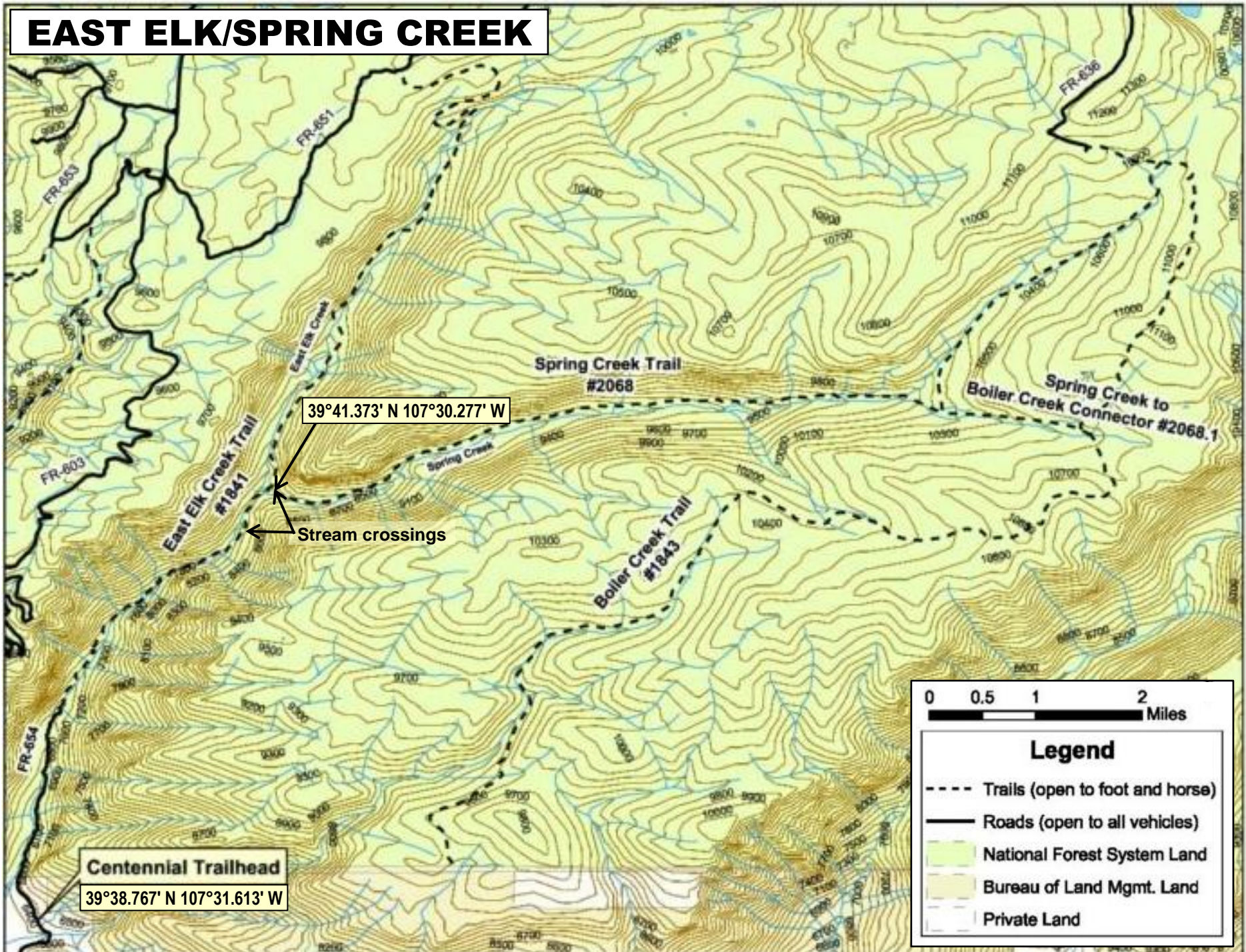


EAST ELK/SPRING CREEK



Centennial Trailhead

39°38.767' N 107°31.613' W

39°41.373' N 107°30.277' W

Stream crossings

0 0.5 1 2 Miles

Legend

- Trails (open to foot and horse)
- Roads (open to all vehicles)
- National Forest System Land
- Bureau of Land Mgmt. Land
- Private Land