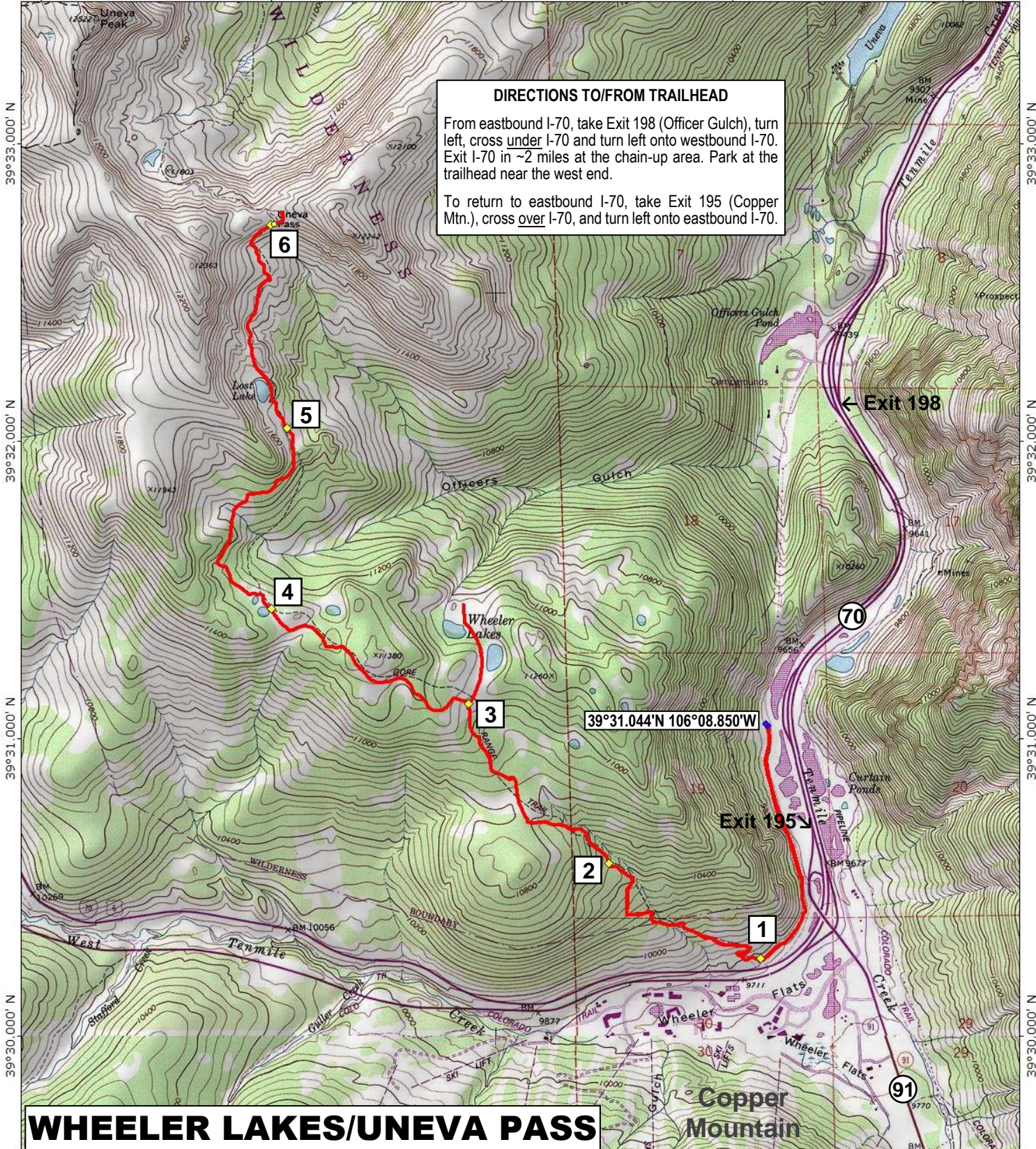


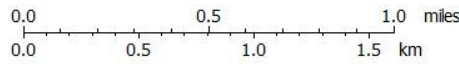
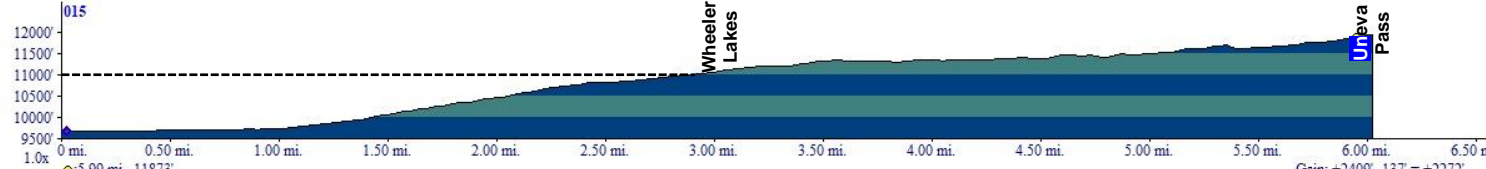
106°12.000' W 106°11.000' W 106°10.000' W 106°09.000' W WGS84 106°08.000' W

DIRECTIONS TO/FROM TRAILHEAD
From eastbound I-70, take Exit 198 (Officer Gulch), turn left, cross under I-70 and turn left onto westbound I-70. Exit I-70 in ~2 miles at the chain-up area. Park at the trailhead near the west end.
To return to eastbound I-70, take Exit 195 (Copper Mtn.), cross over I-70, and turn left onto eastbound I-70.



106°12.000' W 106°11.000' W 106°10.000' W 106°09.000' W WGS84 106°08.000' W

WHEELER LAKES/UNEVA PASS



TN MN
8°
11/22/23