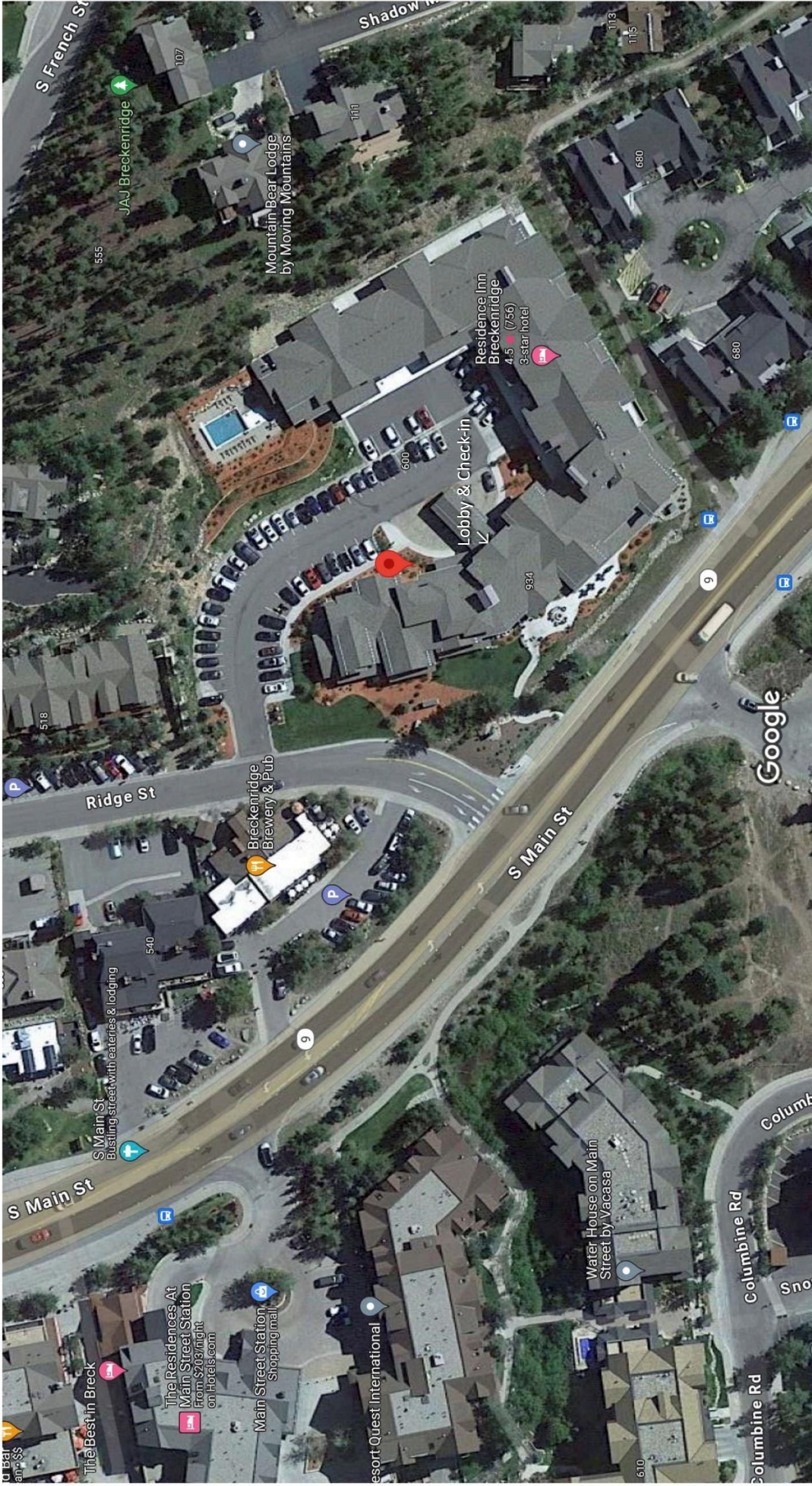
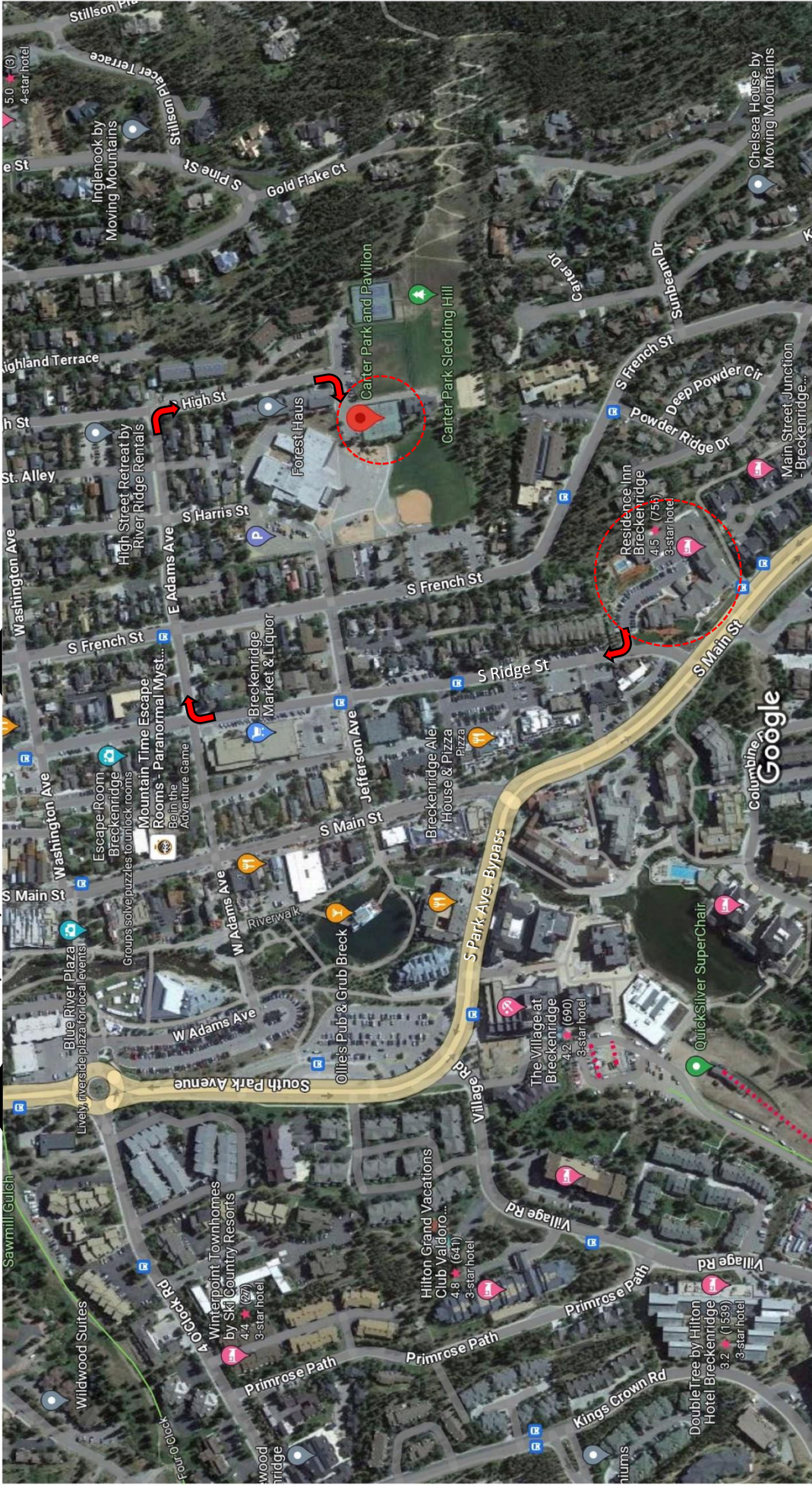


Google Maps Residence Inn Breckenridge, 600 South Ridge Street, (970) 453-1181



Directions to the Breckenridge Residence Inn:
From Main Street in Breckenridge south of the Park Avenue Bypass (Hwy 9), turn left onto Ridge Street, then turn right into the first driveway. Entrance to the lobby is inside the courtyard. Parking is limited to one vehicle per unit; no RVs permitted. Additional parking is available offsite for \$10/day.

To I-70, Frisco, Silverthorne & Dillon



Directions to Carter Park Pavilion:

- Turn right from Residence Inn onto Ridge Street.
- Drive two blocks to Adams Ave.
- Turn right on Adams Ave.
- Drive to the top of Adams Ave. at High St.
- Turn right on High St.
- Drive to the end of High St. at Carter Park.
- Pavilion is on the right, picnic tables at the far end.

To Spruce Creek, McCullough Gulch & Quandary Trailheads

To Alma (town) & Kite Lake

Driving directions to trailheads:

South of Breckenridge

Lower Spruce Creek TH (Crystal Lakes & Mohawk Lakes)

Take Hwy 9 south 2.2 miles to Spruce Creek Road on the right (at "The Crown" sign) just past a lake on the left; Trailheads are 1.3 miles from Hwy 9 on Spruce Creek Road.

Upper Spruce Creek TH (Crystal Lakes & Mohawk Lakes)

Take Hwy 9 south 2.2 miles to Spruce Creek Road on the right (at "The Crown" sign) just past a lake on the left; Trailhead is 2.9 miles from Hwy 9 on at the intersection of the aqueduct road (on the right).

Lower McCullough Gulch TH

Take Hwy 9 south 5.6 miles to the TH on the right; there is a small black print on yellow sign on Hwy 9 indicating the TH.

Quandary Peak & Upper McCullough Gulch THs

Take Hwy 9 south 7.4 miles to Blue Lakes Road on the right; Quandary TH parking is immediately to the right ([permit only](#)); from there you can take a free shuttle to the Upper McCullough Gulch TH. Shuttle runs every 20 min from 8am to 4pm.

Alma to Kite Lake TH (for Decalibron)

Take Hwy 9 south 15.5 miles over Hoosier Pass to the Town of Alma; turn right on Buckskin St. and drive 5.5 miles (4WD) to Kite Lake TH.

North of Breckenridge

Hippo & Champion Loop (via Colorado Trail)

Take Hwy 9 north from Breckenridge (via Main St. or Park Ave. Bypass).

From the northern junction of Main St. and the Bypass (at the roundabout), drive 3.4 miles north on Hwy 9 to Revett Drive (first street north of Tiger Rd.); turn right and drive 0.4 mile to the Colorado Trail TH (wide shoulder on right for parking, trail on the left).

Tenderfoot Mountain & Oro Grande Trails

Take Hwy 9 north from Breckenridge (via Main St. or Park Ave. Bypass).

From the northern junction of Main St. and the Bypass (at the roundabout), drive 5.5 miles north on Hwy 9 to Swan Mountain Road; turn right and follow Swan Mountain Road 4.8 miles to US 6; turn left on US 6 and follow it 3.3 miles to Evergreen Road (on the right at the first traffic light); turn right on Evergreen and immediately turn right again onto a frontage road; follow the frontage road 0.7 mile to the TH.

Summit County Recpath (Dillon to Sapphire Point Overlook w/shuttle)

Take Hwy 9 north from Breckenridge (via Main St. or Park Ave. Bypass).

From the northern junction of Main St. and the Bypass (at the roundabout), drive 5.5 miles north on Hwy 9 to Swan Mountain Road; turn right and follow Swan Mountain Road 1.9 miles to Sapphire Point Overlook. Drop a shuttle vehicle here. Then continue on Swan Mountain Road 2.9 miles to US 6; turn left on US 6 and follow it 3.3 miles to Lake Dillon Drive (on the left at the first traffic light); turn left and drive 0.5 miles to Lake Dillon Marina. Begin hike here.

Meadow Creek TH

Take Hwy 9 north from Breckenridge (via Main St. or Park Ave. Bypass).

From the northern junction of Main St. and the Bypass (at the roundabout), drive 9.3 miles north on Hwy 9 to I-70; cross I-70 and go $\frac{3}{4}$ of the way around the roundabout (one exit before the on-ramp to I-70 westbound); follow the frontage road 0.6 mile to the TH.

Willowbrook TH (South Willow Creek Falls & Willow Lakes)

Take Hwy 9 north from Breckenridge (via Main St. or Park Ave. Bypass).

Alternative 1: From the northern junction of Main St. and the Bypass (at the roundabout), drive 9.3 miles north on Hwy 9 to I-70; go eastbound on I-70/Hwy 9 to the Silverthorne/Dillon exit; turn left at the bottom of the off-ramp and continue on Hwy 9 north 1.8 miles to Willowbrook Road; turn left on Willowbrook Road and follow it 1.1 miles to the TH.

Alternative 2: From the northern junction of Main St. and the Bypass (at the roundabout), drive 5.5 miles north on Hwy 9 to Swan Mountain Road; turn right and follow Swan Mountain Road 4.8 miles to US 6; turn left on US 6 and follow it 6.4 miles to Willowbrook Road; turn left on Willowbrook Road and follow it 1.1 miles to the TH.

Wheeler Lakes/Uneva Pass TH

Take Hwy 9 north from Breckenridge (via Main St. or Park Ave. Bypass).

From the northern junction of Main St. and the Bypass (at the roundabout), drive 8.1 miles north on Hwy 9 to Frisco;

turn left on Main St., drive through Frisco, and go westbound 4.7 miles on I-70 to the TH at the Chain Station on the right (before the Copper Mountain exit) and park near the far end near the TH.

Pitkin Creek Falls and Lake

Same directions as above, except drive 21 miles westbound on I-70 from Frisco to East Vail exit (#180). Turn right at the bottom of the off-ramp, then turn right on north frontage road; drive 0.3 mile to TH.