

109°46.000' W

109°45.000' W

109°44.000' W

109°43.000' W

WGS84 109°42.000' W

# SEVENMILE CANYON

## LEGEND

- Sevenmile Canyon —
- South Fork Sevenmile Canyon —
- Northern Spur Canyon (0.7 mi) —
- Intestine Man Petroglyph ★

38°40.000' N

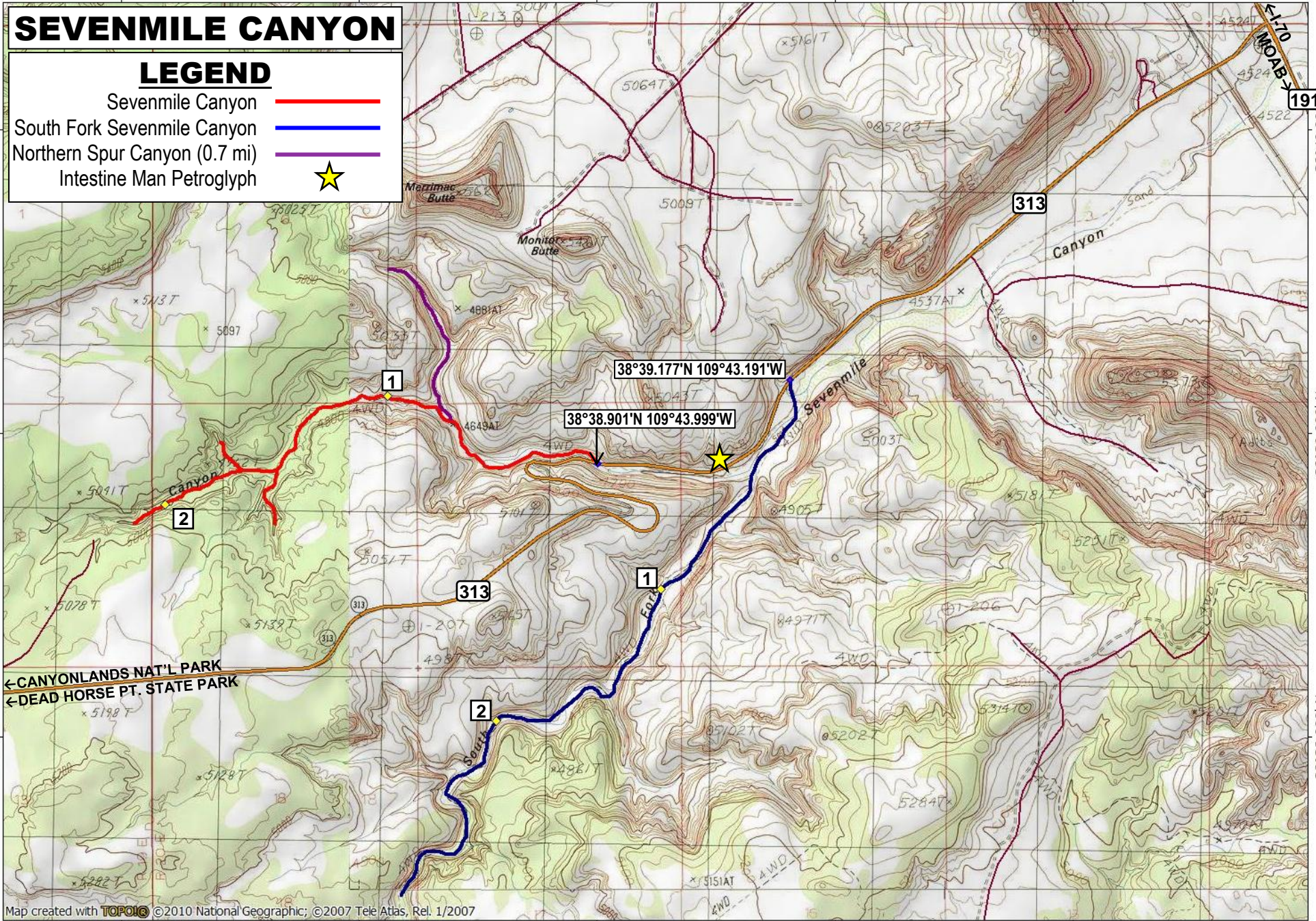
38°39.000' N

38°38.000' N

38°40.000' N

38°39.000' N

38°38.000' N



Map created with **TOPOIG** ©2010 National Geographic; ©2007 Tele Atlas, Rel. 1/2007

109°46.000' W

109°45.000' W

109°44.000' W

109°43.000' W

WGS84 109°42.000' W

